

THE WALKTHROUGH 10.09.08 9:00 AM

Hilton Baltimore Opens With Bird's-Eye Views of Camden Yards

FROM WASHINGTON

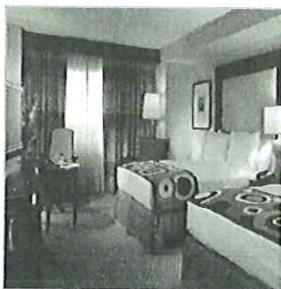
Located approximately 40 miles from the district, the Hilton Baltimore held its grand opening last Thursday. With a construction bill of \$300 million, the 883,000-square-foot property features 757 guest rooms and 60,000 square feet of event space, including two ballrooms named after well-known Baltimoreans. The 25,000-square-foot Francis Scott Key ballroom has intertwining glass ceiling panels and movable blocks that serve as podiums or small stages, while the 15,000-square-foot Billie Holiday ballroom features ceiling light fixtures that mimic constellations.

There are also 26 breakout rooms that can accommodate between 50 and 150 people, as well as an outdoor terrace for 75. Diamond Tavern, the property's restaurant, seats 220 inside and an additional 95 on the outdoor patio. An on-site perk for convention-goers: A fully enclosed pedestrian walkway runs through the center of the Hilton to the Baltimore Convention Center.

Designed by in-house architects, the Hilton Baltimore reflects the nearby Inner Harbor with a navy blue color scheme complemented by orange tones and wooden panels throughout the property. All of the hotel's artwork, including paintings, sculpture, and ceramics, is made by local artists.

Situated next to Oriole Park at Camden Yards, the hotel offers views directly into center field from some of the guest rooms and the fitness center—a perk that Hilton Baltimore sales manager Tamara Jones plans to take advantage of when baseball season hits. “You can have a block party, tailgate party, or rent out one of the suites and watch the game from your balcony.”

—*Robyn Mincher*



The Hilton Baltimore offers a total of 757 guest rooms, each featuring a 32-inch flat-screen TV, high-speed Internet access, and custom-designed beds.



The hotel's fitness center features Precor equipment and floor-to-ceiling windows overlooking Camden Yards.

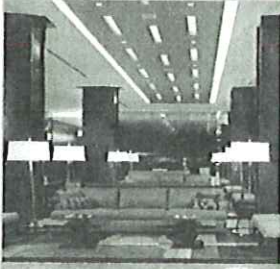
Photo: Courtesy of Hilton Baltimore



The Hilton Baltimore's 15,000-square-foot Billie Holiday ballroom can be set up with seating for a meeting or seminar.

Photo: Courtesy of Hilton Baltimore

*Photo: Courtesy of Hilton
Baltimore*



The hotel's lobby features a vibrant color scheme and artwork by more than 30 Baltimore-based artists.

*Photo: Courtesy of Hilton
Baltimore*



A glass-enclosed pedestrian walkway connects the Hilton hotel and the Baltimore Convention Center. The property is also within walking distance of Camden Yards and the Inner Harbor.

*Photo: Courtesy of Hilton
Baltimore*

RELATED TOPICS *Camden Yards, Baltimore Convention Center, Inner Harbor*